

SCITUATE COMMUNITY PRESERVATION COMMITTEE

Fiscal 2010 APPLICATION FOR FUNDING

Project Name: First Baptist Church National Register Nomination and Historical Records Restoration

CPA funding requested: \$ 14,762. (REQUIRED) \$5,000. Nat. Register \$9,762. Records Restoration

Total project cost: \$ (REQUIRED)

Other Funding Sources Applied For/Obtained:

Grants: \$ Applied For Obtained

Other (describe) \$ Applied For Obtained

Basis for project cost (i.e. appraisal, construction estimate, etc. - please attach all documentation supporting estimated project cost and basis)

Category (check all that apply): Open Space X Historical Housing Recreation

Lot and Plat: *
Assessors Map #: 20-4-16 *
Number of acres in parcel: *
Number of proposed housing units: *
Current Zoning Classification: *

Name of Applicant: First Baptist Church

Contact Name: Cynde Robbins

Address: 292 Clapp Rd. Scituate

Phone: 781-545-4167 E-Mail: Cynde.Robbins@Comcast.net

By signing below, the Applicant agrees to the terms and conditions and all other requirements of this Application and agrees to be bound thereby if funding is granted for the Project.

Applicant's Signature: Robert P. Fidler Date: Oct 28, 2009
Printed Name: ROBERT P. FIDLER
Title: CHAIRMAN / TRUSTEES

RECEIVED
OCT 30 10:03

**First Baptist Church of Scituate
National Register Nomination and
Preservation of Historical Church Records**

The First Baptist Church of Scituate located at 660 Country Way in North Scituate is requesting funding for 2 projects.

The first project is for nomination to the National Register of Historic Places. Our building dates to 1869 with the origins of the church to 1815. We have made few changes to the interior of our building since it was built but feel that our bathroom and kitchen facilities need updating. We have been advised that National Register status will be helpful when we apply for grants to update our facility.

We have included a copy of the PAL Form-B report which references that First Baptist Church of Scituate qualifies for the nomination under Criteria A and C. We have been in touch with Doug Smith of the Scituate Historical Commission and will be working with him on this project.

The estimated cost to complete the National Register Listing is \$5,000. This money would be used to hire a preservation consultant to prepare and submit the National Register Listing application.

The second project is preservation and restoration of 6 historical church record books. One book is a photo album containing photographs of all the ministers and some of their families from 1825 until 1989. Another book contain minutes of meetings and membership lists of the original founding Society of First Baptist Church from 1818 up to 1870, Sunday school records 1851-1853, members list from 1825 to 1911 and various other early records. These record books and the costs to preserve them are detailed in the estimate provided by Brown River, an archival preservation company recommended by Betty Foster at the Scituate Town Archives. The books have recently been discovered by our current minister and are in good shape considering how old they are according to the Brown River specialist who looked at them recently.

Our proposal requests funding for preservation of the books as well as provisions to provide public access to the invaluable information included in them. We propose providing extra microfilm copies for the library, which has a reader for microfilm, and the Town Archives since they have a fireproof cabinet to keep a copy in. CDs would also be made of all the books so paper copies can be printed.

The estimated costs from Brown River are detailed in their proposal attached to this application. Those costs are broken down by individual books and total \$9512.00. We have added \$250.00 to the estimate for printing hard copies for the Scituate Library, Town Archives and Scituate Historical Society bringing the total for records restoration to \$9762.00.

This project supports the Town's CPA goals for historic resources. Goal 3 states "recognizing, preserving and enhancing the historic heritage and character of the Town of Scituate for current and future generations".



October 29, 2009

Dear Cynde:

Please find enclosed the results of our survey of your records with reference to deacidification and conservation.

Our recommendations for the conservation of your records include deacidification, mending and reinforcement of paper as necessary (with repair or replacement of index tabs where indicated) resewing, rebinding or Mylar encapsulation, as appropriate. The deacidification process, which halts the inevitable self destruction of acidic paper, should be considered whenever conservation or even long term storage of unique records is evaluated.

Deacidification is performed with non-aqueous magnesium oxide (Bookkeeper). All pressure sensitive materials are removed. Mending is done using Japanese tissue and reversible adhesives. Books are re sewn with linen thread and bound in goatskin or other cover material of choice using acid-free materials and easily reversible adhesives. Where appropriate, Mylar encapsulation with placement of materials into custom post binders replaces rebinding.

Brown's River Marotti Co. will provide you with all materials necessary to safely pack and ship your records to our facility. Simply inform us of the number and size of the books you wish to send. Once you receive the materials and pack your books, we will arrange to have them picked up directly from your office. Written confirmation is sent upon our receipt of your books. Should you need any information from your records while we have them, call our toll free number and a staff member will mail, fax or read the information to you.

Please contact us at 800-639-3027 with any questions or comments or to arrange transportation of your documents.

Best regards,

Bill Stewart

Conservation Proposal
October 29, 2009

<u>Title</u>	<u>Preservation</u>	<u>35mm security film</u>	<u>2 duplicate rolls</u>	<u>(CD (PDF or TIFF)</u>
Records of Baptist Society 1810-1870	\$720.00	\$100.00	\$90.00	\$75.00
Membership 1825-1880 & 1907	957.00 Mylar, 1 vol.	125.00	90.00	100.00
Original Membership List - copy	566.00 Mylar, 1 vol.	100.00	90.00	75.00
Photos of Ministers c. 1825-1989	3700.00 to 4500.00	n/a	n/a	200.00
Sunday School Journal 1851-1853	500.00	100.00	90.00	75.00
Records 1825-1848	694.00	100.00	90.00	75.00

FORM B - BUILDING

Assessor's number

USGS Quad

Area(s)

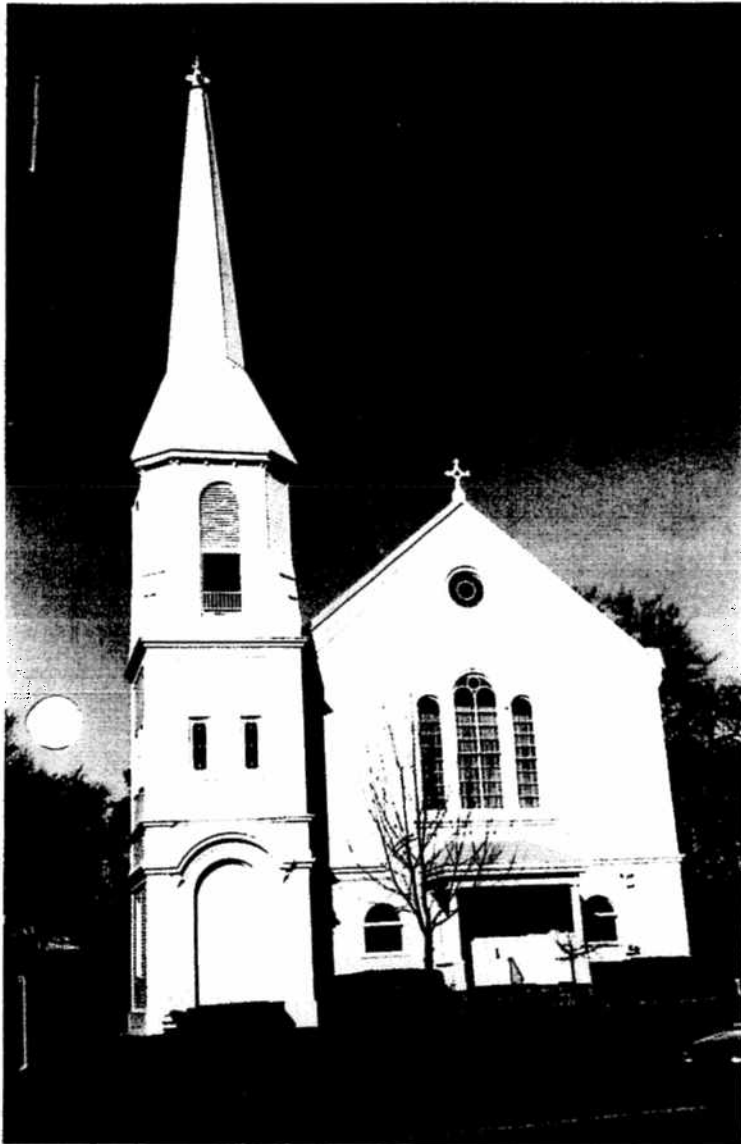
Form Number

20/4/14

Cohasset, MA

SCI.65

Massachusetts Historical Commission
Massachusetts Archives Facility
2 Morrissey Boulevard
Boston, Massachusetts 02125



Town Scituate

Place (*neighborhood or village*) _____

Address 656 Country Way

Historic Name First Baptist Church

Uses: Present religious

Original religious

Date of Construction ca. 1869-70

Source Bailey 1913; date in gable

Style/Form Victorian Eclectic

Architect/Builder S.S. Woodcock, Fuller

Exterior Material:

Foundation not visible

Wall/Trim clapboard

Roof asphalt

Outbuildings/Secondary Structures _____

Major Alterations (*with dates*) _____

see architectural description

Condition good to excellent

Moved no yes Date _____

Acreage 22,000 square feet

Setting located in residential neighborhood; set back

approximately 35 feet from road; grass; trees;

shrubs; circular drive

Recorded by J. Doherty, J. Mekinda

Organization PAL

Γ (*month/day/year*) March 2000

Follow Massachusetts Historical Commission Survey Manual for instructions for completing this form.

BUILDING FORM

Community: Scituate
Address: 656 Country Way

ARCHITECTURAL DESCRIPTION

The First Baptist Church of Scituate at 656 Country Way is a 2½-story, Victorian Eclectic-style structure that was constructed ca. 1869-1870. The church is rectangular in plan with an end-gable roof and a three story tower located on the southwest corner of the facade. The roof of the church is covered with asphalt shingles and the walls are sheathed with wood clapboard. A brick chimney is located on the east slope of the roof. The main block has a three-bay, symmetrical facade with the entrance located in the center bay. The entryway is composed of wide double-doors covered by a wide hipped-roof which is supported by plain classical columns. On either side of the entryway is a horizontally divided, arched window. A bold, wood string course of tripartite molding, located above the roof of the entryway, separates the ground floor and the upper stories. Above the entrance of the main block is located a tall, three bay, multi-paned, arched window, the sill of which is set directly above the string course. A lunette window is located directly below the peak of the gable.

The building is dominated by the square, 3-story tower located at the southwest corner of the main facade which projects forward from the main block of the church. An arched doorway is set in the front facade of the tower and the corners of the tower are marked by quoins. The bold string course of the main block continues on the tower, delineating the ground floor from the upper stories. The second story of the tower is marked by a string course at the bottom and top of the floor and contains rectangular casement windows. The third story of the tower is marked by tapered, chamfered corners and has arched windows with louvered ventilation shutters. Decorative brackets support a cornice above the third story and the dual-pitched roof of the tower rises from this base. The church is set back from the road and a circular driveway leads to the main entryway.

HISTORICAL NARRATIVE

The First Baptist Church of Scituate traces its origins to 1815, when six residents of Scituate were baptized at the Baptist church in Hanover. Due to the distance between Scituate and Hanover, shortly after their baptism these six obtained the services of Reverend Joseph Torrey for part of the year and held services in the home of Deacon Abiel Cudworth in Scituate (Bailey 1913:5). Over the next few years several pastors preached in Scituate and the congregation began to grow. By 1818, the group of Baptists in Scituate had become large enough to establish independence from Hanover. On February 21 of that year the Scituate Baptists met at the house of Captain Ezra Vinal and formed the Baptist Society of Scituate and adopted a constitution. The Society continued to meet in the homes of its members until 1821, when the Society obtained the use of an unoccupied house where they held services until 1825 when the first Meeting House was built near Scituate Center. A small building approximately 40 ft. by 33 ft., the Meeting House provided the Society with its first private gathering area. Shortly after occupying the building, the Society dedicated it and formed a church (Vertical files, "Churches," Scituate Public Library; Bailey 1913:5-6).

Over the next thirty years the society continued to grow, and by the mid-1860s the Meeting House was in need of major repairs. In 1866 a committee was formed to investigate the possibility of building a new church, and began to search for an appropriate site and an appropriate form. Later that year, George Lee, a prominent citizen of Scituate, donated land in North Scituate for the building of the church (Bailey 1913:11). In 1868 a new pastor, the Reverend William H. Kelton, was appointed and soon after the construction began on the new church and parsonage. The church was designed by the architect S.S. Woodcock, who died shortly after construction began. The project was completed by an architect named Fuller. Construction of the new church proceeded at a slow pace due to the fact that the Society had voted not to incur any debt and therefore had to raise money to pay for each new installment. The building committee also relied heavily on the donations of the members of the Society, many of whom donated time and materials as well as money (Bailey 1913:13). By May of

X Recommended for listing on the National Register of Historic Places. *If checked, you must complete a National Register Criteria Statement.*

INVENTORY FORM CONTINUATION SHEET

Community:
Scituate

Property Address:
656 Country Way

Massachusetts Historical Commission
Massachusetts Archives Facility
220 Morrissey Boulevard
Boston, Massachusetts 02125

Area(s)

Form No.
SCI.65

1869 the church was sufficiently complete to hold services. Construction of the church was finished by the end of September, 1870 and on October 4 the Baptist Society of Scituate officially voted to transfer all powers to the First Baptist Church, North Scituate. The dedication services in the new church were held on October 6, 1870 (Bailey 1913:14). The membership of the Church has continued to grow since its founding in 1870 and few changes have been made to the exterior of the building since the time of its construction (Vertical files, "Churches," Scituate Public Library).

BIBLIOGRAPHY and/or REFERENCES

- Anonymous. *Directory and History of Scituate, Mass., 1894*. J.H. Hogan Company, Quincy, MA, 1894.
- Anonymous. *Scituate, 1636-1961*. Scituate Chamber of Commerce, 1961.
- Anonymous. "100 year Old Photo Inspires Art Association." *The South Shore News*. March 28, 1973.
- Bailey, Henry Turner. *Yankee Notions*. Washburn & Thomas, Cambridge, MA, 1929.
- Bailey, Sarah Tilden. *The First Baptist Church*. The Boundbrook Press, Scituate, MA, 1913.
- Bangs, Jeremy Dupertuis. *The Seventeenth-Century Town Records of Scituate, Massachusetts*. 2 vols. New England Historic Genealogical Society, Boston, MA, 1999.
- Bonney, Margaret Cole. "My Scituate." n.d. On file, Scituate Public Library.
- Bonney, Margaret Cole. *Scituate's Sands of Time*. Ca. 1988. On file, Scituate Public Library, Scituate, MA.
- Engle, Kim Withers and Betsy Friedberg. *National Register of Historic Places Inventory - Nomination Form, Woodworth House, Scituate, MA*, 1996.
- Briggs, Lloyd Vernon. *History of Shipbuilding on North River, Plymouth County*. Coburn Brothers, Boston, MA, 1889.
- Daughters of the American Revolution (DAR). *Old Scituate*. DAR, Chief Justice Cushing Chapter, Boston, MA, 1921.
- Deane, Samuel. *History of Scituate, Massachusetts: From the First Settlement to 1831*. James Loring Publisher, Boston, MA, 1831.
- Dixon, Mila Bates. "Worth Mentioning: Henry Turner Bailey had the best home office." *The Scituate Mariner*, December 12, 1996.
- Ellis, Katherine. *The History of Ellsberg*. ca. 1940. On file, Scituate Public Library, Scituate, MA.
- Freyman, Jarvis. *Scituate's Educational Heritage: 1630-1990*. Scituate Historical Society, Scituate, MA, 1990.
- Howard, Harold. *Towns of Scituate and Marshfield, Massachusetts Directory*. Harold Howard, Boston, MA, 1926.
- Howe, Henry. *Early Explorers of Plymouth Harbor, 1525-1619*. Plimoth Plantation, Inc. and the Pilgrim Society, Plymouth, MA, 1953.
- Humphrey, Thomas J. and Norton D. Clark. *Boston's Commuter Rail: The First 150 Years*. Boston Street Railway Association, Boston, MA, 1985.
- Hurd, D. Hamilton, editor. *History of Plymouth County, Massachusetts*. J. W. Lewis, Philadelphia, PA, 1884.
- Irwin, Will. *Scituate, 1636-1936*. Scituate Tercentenary Committee, Scituate, MA, 1936.
- Kubie, Kathryn and Margo B. Webber. *National Register of Historic Places Inventory - Nomination Form, Captain Benjamin James House, Scituate, MA*, 1983.
- League of Women Voters. *About Our Town*. League of Women Voters, Scituate, MA, 1955.
- Lincoln, Charles C. *Old Roads of Scituate*. 1950-51. On file, Scituate Public Library.
- Lincoln, Charles C. *Topology of Land Marks [Scituate]*, 3 vols. 1950-51.
- Local History Collection. Scituate Public Library, Scituate, MA.

INVENTORY FORM CONTINUATION SHEET

Community:

Scituate

Property Address:

656 Country Way

Massachusetts Historical Commission

Massachusetts Archives Facility

220 Morrissey Boulevard

Boston, Massachusetts 02125

Area(s)

Form No.

SCI.65

Massachusetts Historical Commission. *Historic and Archaeological Resources of the Commonwealth*. Massachusetts Historical Commission, Boston, MA, n.d.

Inventory Forms: Scituate, MA. On file.

Maker Index, December 1999. On file.

Reconnaissance Survey Report: Scituate, Massachusetts. Massachusetts Historical Commission, Office of the Secretary of State, Boston, MA, 1982.

Merritt, Joseph Foster. *Old Time Anecdotes of the North River and the South Shore*. Rockland Standard, Rockland, MA, 1928.

Miles, Margaret. *Notes on the Ellis Property*. 1972. On file, Scituate Public Library, Scituate, MA.

Mills, Jeanne. "This May the Pierce Memorial Library Will Be Eighty Years Old." *The South Shore News*, April 3, 1974.

Murphy, Barbara. *Scituate: The Coming of Age of a Plymouth County Town*. No publisher, 1985. On file, Scituate Public Library, Scituate, MA.

Pratt, Harvey Hunter. *The Early Planters of Scituate*. Scituate Historical Society, Scituate, MA, 1929.

Scituate Historical Society. *The Cudworth House, Stockbridge Mill, and Other Places Of Historic Interest*. Scituate Historical Society, Scituate, MA, 1966.

Scituate Scrapbooks. On file, Scituate Public Library, Scituate, MA.

Town of Scituate. *List of Persons Twenty Years of Age and Older Residing in Town of Scituate on January 1, 1936*. Sanderson Brothers, North Abington, MA, 1936.

Town of Scituate. *Persons Assessed For Poll Tax in the Town of Scituate, April 1, 1924*. On file, Commonwealth of Massachusetts State Library, Boston, MA, 1924.

Town of Scituate. *Valuation List, 1927*. On file, Scituate Public Library, Scituate, MA.

United States Bureau of the Census. Population Figures. 1790-1980.

Vertical files -- "Churches," "Greenbush," "Historic Landmarks," "Houses," "Scituate People." On file, Scituate Public Library, Scituate, MA.

Maps

Anonymous. *Atlas of Plymouth County, Massachusetts*. Geo. H. Walker & Co., Boston, MA, 1879.

Anonymous. *Map of Scituate in 1640*. On file, Scituate Historical Society, Scituate, MA.

Anonymous. *Map of Settlement of "Men of Kent" Scituate 1633*. In Anonymous, *Scituate, 1636-1961*. Scituate Chamber of Commerce, 1961.

Anonymous. *Town of Scituate, Mass*, 1879. On file, Scituate Historical Society, Scituate, MA.

Anonymous. *Village of Scituate; Town of Scituate; Minot Post Office*, 1903. On file, Scituate Public Library.

Bailey, Frederic T. *Historical Map of the Town of Scituate*, 1930. On file, Scituate Historical Society, Scituate, MA.

Bangs, Jeremy Dupertuis. *The Conihasset Grant*. In Bangs *The Seventeenth-Century Town Records of Scituate, Massachusetts*. 2 vols. New England Historic Genealogical Society, Boston, MA, 1999.

Des Barres, Joseph F.W. et al. *The Atlantic Neptune Series*. Ca. 1774-1781. On file, Scituate Historical Society, Scituate, MA.

Richards, L. J. & Co. *Town of Scituate, Atlas of Plymouth County*, 1903. On file, Scituate Historical Society, Scituate, MA.

Robbins, A. and S. A. Turner. *Map of Scituate, Massachusetts*. Pendelton's Lithography, Boston, MA, 1831.

Sanborn Map Company. *Scituate, Massachusetts, Plymouth County*. Sanborn Map Company, New York, NY, 1908; 1918; 1926; 1939; 1944.

Scituate Planning Board. *Street Map of Scituate, Massachusetts*. Scituate Planning Board, Scituate, MA, Sept. 1952.

Turner, Charles. *A Plan of the Town of Scituate*, 1795. On file, Massachusetts State Archives, Boston, MA.

INVENTORY FORM CONTINUATION SHEET

Community:
Scituate

Property Address:
656 Country Way

**Massachusetts Historical Commission
Massachusetts Archives Facility
220 Morrissey Boulevard
Boston, Massachusetts 02125**

Area(s)

Form No.
SCI.65

Walling, Henry F. *Map of the County of Plymouth: Scituate Harbor and Scituate Centre.* D.R. Smith & Co., Boston, MA, 1857.

Walling, H.F. and O.W. Gray. *Official Topographic Atlas of the State of Massachusetts.* Brown & Lyon, Boston, MA, 1871.

NATIONAL REGISTER OF HISTORIC PLACES CRITERIA STATEMENT

The First Baptist Church of Scituate is eligible for listing in the National Register of Historic Places under Criteria A and C at the local level in the areas of religion and architecture. Constructed in 1869-1870 as the second permanent home of the First Baptist Society in Scituate, the church has served its congregation continuously for over 100 years, and therefore meets Criterion A. In addition, the building is a landmark in the northern part of Scituate, and an interesting local example of Victorian Eclectic-style, ecclesiastical architecture. The building's notable features are derived from popular mid-to-late nineteenth-century architectural styles. They include corner quoins and decorative brackets, showing the influence of the Italianate style; and a steep, dual-pitched roof on the building's square, corner tower, reflecting the Gothic Revival style. As such, the building meets criterion consideration A as a religious property that derives its primary significance from its architectural distinction. The property possesses integrity of location, design, setting, materials, workmanship, feeling, and association. Additional historical research will be required to complete the nomination.

INVENTORY FORM CONTINUATION SHEET

Community:
Scituate

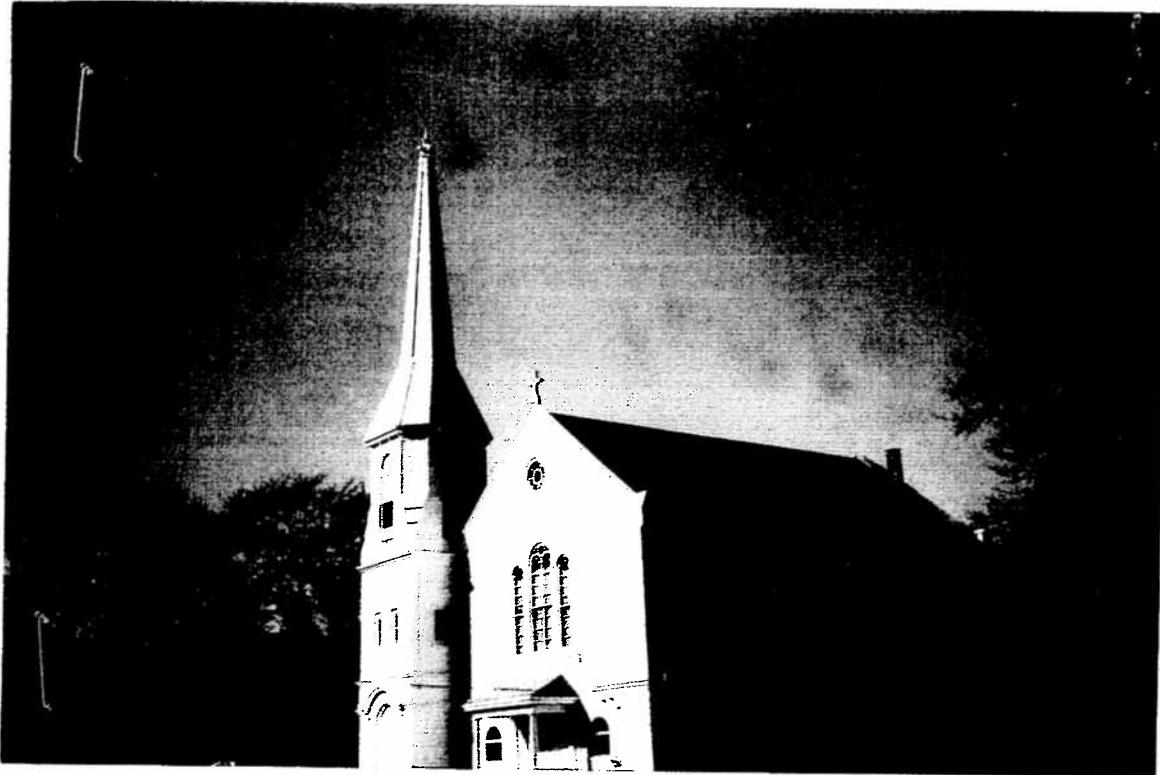
Property Address:
656 Country Way

**Massachusetts Historical Commission
Massachusetts Archives Facility
220 Morrissey Boulevard
Boston, Massachusetts 02125**

Area(s)

Form No.
SCI.65

PHOTOGRAPHS





656 Country Way

TOWN OF SCITUATE CONSERVATION

TOWN OF SCITUATE CONSERVATION
PARCEL 14
34.8 ACRES

TOWN OF SCITUATE
SCHOOL

LOT 2
14,430 SF
0.33 AC

LOT 1
14,782 SF
0.34 AC

LOT 3
14,430 SF
0.33 AC

LOT 4
14,782 SF
0.34 AC

LOT 5
14,430 SF
0.33 AC

LOT 6
14,430 SF
0.33 AC

LOT 7
14,782 SF
0.34 AC

LOT 8
14,430 SF
0.33 AC

LOT 9
14,782 SF
0.34 AC

LOT 10
14,430 SF
0.33 AC

LOT 11
14,430 SF
0.33 AC

LOT 12
14,782 SF
0.34 AC

LOT 13
14,430 SF
0.33 AC

LOT 14
14,782 SF
0.34 AC

LOT 15
14,430 SF
0.33 AC

LOT 16
14,430 SF
0.33 AC

LOT 17
14,782 SF
0.34 AC

LOT 18
14,430 SF
0.33 AC

LOT 19
14,782 SF
0.34 AC

LOT 20
14,430 SF
0.33 AC

LOT 21
14,430 SF
0.33 AC

LOT 22
14,782 SF
0.34 AC

LOT 23
14,430 SF
0.33 AC

LOT 24
14,782 SF
0.34 AC

LOT 25
14,430 SF
0.33 AC

LOT 26
14,430 SF
0.33 AC

LOT 27
14,782 SF
0.34 AC

LOT 28
14,430 SF
0.33 AC

LOT 29
14,782 SF
0.34 AC

LOT 30
14,430 SF
0.33 AC

LOT 31
14,430 SF
0.33 AC

LOT 32
14,782 SF
0.34 AC

LOT 33
14,430 SF
0.33 AC

LOT 34
14,782 SF
0.34 AC

LOT 35
14,430 SF
0.33 AC

LOT 36
14,430 SF
0.33 AC

LOT 37
14,782 SF
0.34 AC

LOT 38
14,430 SF
0.33 AC

LOT 39
14,782 SF
0.34 AC

LOT 40
14,430 SF
0.33 AC

A Brief History of First Baptist Church of Scituate

by Paul R. Miles and W. Gray Curtis

February 24, 2007

The origin of the Baptist Church in Scituate goes back to 1811 and efforts of Abiel Cudworth (4th generation of General James Cudworth who was one of the original settlers of Scituate). He formed a group of friends who got together regularly in several family homes, namely those of James Cudworth, Ezra Vinal, Nehemiah Curtis, Paul Clapp, Noah Jenkins and Roland Litchfield, to have meetings based on the Baptist faith. In 1818 they agreed to become the First Baptist Society of Scituate with Articles that included "no taxation" of its members for the support of worship.

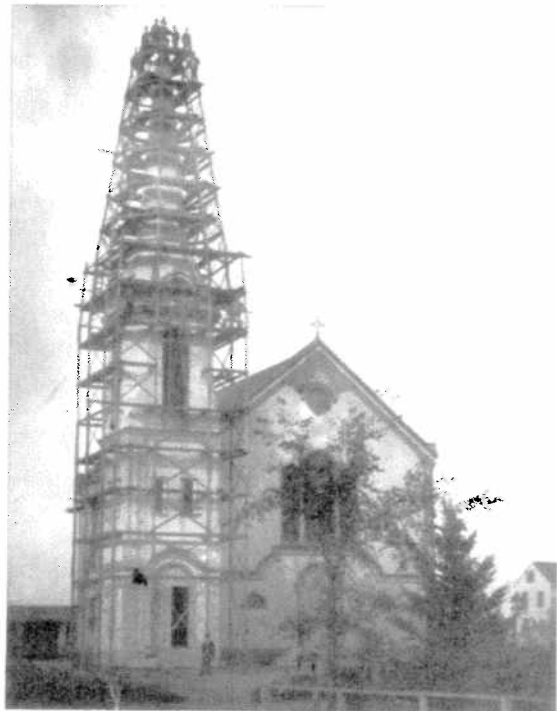
In 1825, with the group growing, they hired Zeba Cushing to build the Scituate Baptist Chapel at the center of town. Zeba was recently married to Betsy Briggs and later became the 2nd Scituate Lighthouse Keeper. That original building had one story with a peaked roof and was forty feet long by thirty three feet wide. It was expanded in 1842 by adding a cupola and choir loft. To help finance this undertaking they sold (by deed) or rented twenty-one known numbered pews in the Chapel to their members.

The early Baptist Society had refused to call itself a Church because of the small membership and limited finances to justify that designation. However, by 1868 the Baptist Society had grown to an extent that called for an expansion and a new location to better serve their congregation. George Lee solved the relocation problem by offering a donation of land in North Scituate at 660 Country Way and it was nearer to the homes of many of the members. That new church building was built on that lot and completed in early 1870.

Following completion, the Baptist Society formally reorganized on October 6, 1870 and the final agreement included transfer of all its assets and statements regarding worship policies to become the First Baptist Church of Scituate. The old Baptist chapel at the center of Town soon became the G.A.R. Hall which is now owned by the Scituate Historical Society.

Design of the new church building was started by a Mr. Woodcock as architect who passed away but was completed by another architect (Mr. Fuller) who may have been from the same architectural firm. Unfortunately many of the early records of the church were destroyed when heavy rains and coastal flooding in 1955 filled the cellar vaults of the Rockland Trust Bank on Front Street in Scituate. Those documents probably included details of the building structure as presented by the architects (with their full names and that of the architectural firm). Work started on the construction of the church in 1868.

The first floor vestries were completed and made ready for regular services in 1869 when the chapel at the center of town was vacated in May and then the move was made to North Scituate the following week. The second floor Sanctuary was completed late in early 1870. When the new church was formally dedicated later in 1870, the new railroad arranged to back a train down to Scituate for interested riders from Boston and towns to the south of Boston to disembark behind the church to attend that special service! Apparently, the train round house in Greenbush was not in operation at that time!



The Baptist moved down to North Scituate with their new and larger building in 1870. The photograph made from a glass negative shows the steeple being constructed probably in 1870. Notice that there is to be a clock face in the steeple. This church contained a large number of members by 1890 more than 100 children were enrolled in the morning Sunday school. The church held Thursday evening prayer meetings as well. These services were well attended, and it was permissible and without expense for anyone to preach in a meeting with the aid of one.

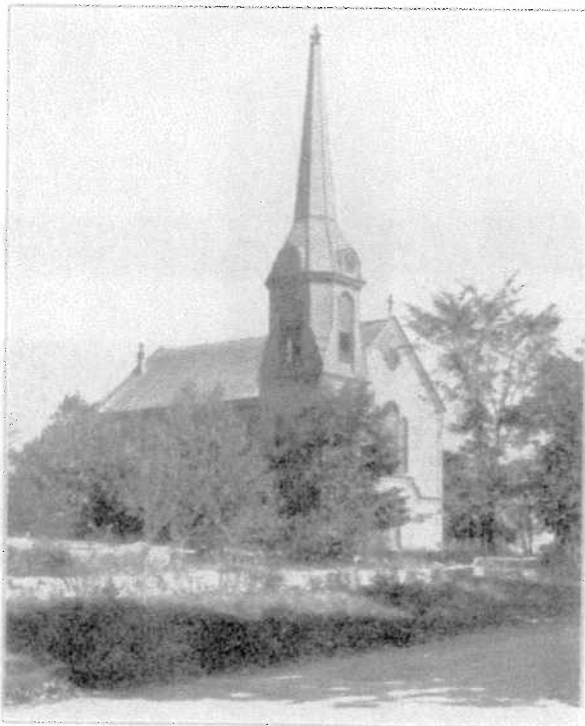
A new Parsonage at 667 Country Way was constructed across the street from the church, also in 1869. That building was sold to a private owner in 1961 after a new building was acquired next door to the church to serve as the new Parsonage. A 1200 pound bell was donated and installed in the steeple in 1879, donated by J.T. Bailey of Boston and was replaced by the same man in 1880 after the first bell cracked. The first baptistry was installed in Fellowship Hall at the ground level in 1872. However, in 1882 a new baptistry was installed in the Sanctuary where its use was felt to be more meaningful. Prior to this time, all baptisms were performed in the Bound Brook stream below the dam of historic Mordecai Lincoln Mill at the Scituate/Cohasset border and sometimes in the creek directly in back of the church (even in winter when they occasionally had to break ice!).

Structurally, the present building has a footprint of 44 ft wide by 89 ft long and is about 50ft high to the ridge. The 100ft high steeple is located on the southwest corner of the building where the bell is installed in an open area about 40 feet up from the base. Four clock faces were installed above the bell deck (see the 1925 photo from the Centennial Celebration brochure below) which were probably removed in the early 1930s due to maintenance problems.

The clapboard siding is original and the cedar shingle roofing was removed probably in about 1940 and replaced with asphalt shingles. It was last shingled in 2001 and a lightning arrestor system was also installed in 2004. There are three doors providing access to the church (a pair of large original

Centennial Celebration

Christ the Lord build the house they labor to raise that build us. — Ps. 127:1



1825 - 1925

First Baptist Church in Scituate

NORTH SCITUATE, MASS.

SEPTEMBER 6 TO 13, 1925

Christ the Lord save God as to have done since that day. — Job 23:4

double doors at the front of the main building and two standard 30 inch doors on the east side of the building). Another pair of original double doors are also installed at the base of the steeple but are not used presently because of structural issues. There are nine 13 ft tall stained glass windows in the Sanctuary area which were designed by member and local artist Henry Turner Bailey of Scituate (and Cleveland where he was Dean of the Cleveland School of Art for many years). The windows were installed in 1901.

The first floor of the building contains three rooms (including a large Fellowship Hall, an adult Sunday School room, and a small vestry), a kitchen and two rest rooms, a foyer at the front and two staircases to the second floor at the front and a back stairway to the baptistry. The Sanctuary, choir loft, baptistry and large closet are located on the second floor. An elevator was installed between the foyer and the second floor in 1992. The church has been painted periodically and repaired as needed to maintain the original fabric of the building.

As an interesting footnote, we know from Captain Stafford Short, a pilot for Eastern Airlines in the early 1950s, that the steeple of the church was used as an aid to navigation for landing approaches to Logan Airport by New York/Boston flights. This occurred prior to the regular use of radio and radar navigation aids such as those presently in use today.

The present Parsonage of the church with a large garage was purchased in 1961 and is located immediately to the east of the church building.

First Baptist History at a Glance



Abiel Cudworth Home 1818 - 1825



Baptist Society Meeting House - 1825

- 1818 Organized the Baptist Society of Scituate (Founding Society) Abiel Cudworth and Roland Litchfield walking from Hanover.
Captain Ezra Vinal opening his home in cold February.
- 1825 Thirty persons constitute a church at Scituate Center.
Met weekly in unfinished chambers of Old Cudworth House.
Rev. Amos LeFavor and his wife Henrietta leading.
Nathaniel Damon from Marshfield, one of the first Deacons.
- 1825 Simple, plain chapel built with Zeba Cushing, contractor
Building included a pulpit, pews, seats for singers.
- 1826 Rev. Adoniram Judson of Plymouth, interim pastor
Father of first Baptist foreign missionary, field: Burma
- 1832 Beginnings of FBC Sewing Circle and Missionary Society
- 1842 First baptisms at Landing Rock, off Mordecai Lincoln Road.
Meeting house enlarged following "great revival," Boston,
Later known as grand Army Hall, in the town center.
- 1868 Dedication of the new church, Rev. William Kelton, pastor.
Railroad almost completed from Boston to Greenbush.
Train backed from Cohasset to Scituate.
- 1888 Pipe organ installed; Harvard student Albert Bailey, organist Bessie (Clapp) Prouty began 32 years as organist, before 1900.
- 1893 Missions established in Greenbush and Minot.
- 1901 Junior, Intermediate and Senior Christian Endeavor groups.
Installation of nine memorial windows.
- 1909 Telephone installed, and in 1912 electric lights.
- 1925 Centennial Celebration, September 6-13
During renovations church meets in Victoria Theatre.
- 1926 Martha Mitchell, Women's Sunday School class founded
- 1929 First Vacation Bible School, Winifred Elliott Haartz, leader
- 1941 Hammond electric organ purchased; youth led money raising
- 1968 Recognition services for the Founders of FBC, Scituate
- 1975 150th Anniversary of formation of the church



Present Building - 1865

Our Pastors Through the Years

<i>Abiel Cudworth</i>	1818 - 1825
<i>Amos LeFavor</i>	1825 - 1826
<i>Adoniram Judson</i>	1826 (<i>Interim</i>)
<i>William Kelton</i>	1868
T. Richard Peede.....	1888 - 1893
Albert D. Spaulding.....	1893 - 1901
Arthur W. Cleaves.....	1901 - 1906
Hartnell J. Bartlett.....	1906 - 1911
George Loring Thurlow.....	1911 - 1916
Lester R. Norton.....	1916 - 1918
William A. Karraker.....	1918 - 1920
Allen David Creelman.....	1920 - 1957
Charles W. Ludeking.....	1957 - 1964
Herbert C. Chamberlin.....	1964 - 1970
Richard C. Henry.....	1970 - 1975
Nathan Wood.....	1977 - 1989
Jean M. Greer.....	1989 - 1990 (<i>Interim</i>)
Richard W. Dutton.....	1990 - 1994
Steven Youd.....	1995 - 1996 (<i>Interim</i>)
Mark Minervino.....	1997 - 2000
Irving Beveridge.....	2000 (<i>Interim</i>)
Stephen A. Trimble.....	2000 - Present